

POWERBALL

Player's guide

Answering your questions

If you have any questions or would like any of our games explained in more detail, ask at any Lotterywest retailer or call our Customer Enquiries staff on (08) 9340 5200.

To check your numbers, visit our website at www.lottoresults.net, use the Ticket Checker at any Lotterywest retailer, or call 1900 919 958 (Dialect Interactive. Calls cost 44 cents per minute including GST. Mobiles and pay phones extra).



Lotteries Commission of Western Australia t/a Lotterywest
74 Walters Drive, Osborne Park, Western Australia 6017
Telephone: (08) 9340 5100 Facsimile: (08) 9242 2577
www.lotterywest.com.au

ABN 78 531 150 466



POWERBALL

www.lotterywest.com.au

Powerball

Powerball is one of the most exciting lottery games as it jackpots often and offers players the chance to win multi-million dollar prizes. In fact, if you do win a Powerball Division One prize you are most likely to win it on your own, making you an instant multi-millionaire.

The Powerball draw is on each Thursday night and there are two draw barrel machines, Barrel A and the Powerball Barrel. The first machine randomly draws five balls (from Barrel A) and the second machine draws a single Powerball (from the Powerball Barrel). If those five numbers and the Powerball match your numbers for that draw, you win Division One.

Prices are in the Cost of Entry brochure, which is available from Lotterywest retailers and on the Lotterywest website.

You can buy Powerball tickets up to 6.00pm on Thursdays.



Finally, give the playslip to your Lotterywest retailer who will process it through the terminal and give it back to you with a print out of your chosen numbers. This is your ticket and is needed to claim prizes, so please keep it in a safe place.

Slikpiks

Slikpiks are tickets of randomly selected numbers produced by the terminal. Slikpik 25 is a popular choice, but there are also 50, 30, 18, and 12 game Slikpiks. Slikpiks are also available for Systems tickets.

Ticket Repeat

You can select your numbers to enter future Powerball draws by presenting an existing ticket (including Slikpiks) and requesting the same type of ticket and combination of numbers. Just ask your Lotterywest retailer about the Ticket Repeat option.

How do I win?

Powerball has seven prize divisions and you can win with as little as three Winning Numbers. In some divisions, you don't even need the Powerball to win a prize.

DIVISION	WHAT YOU NEED TO WIN	ODDS OF WINNING
1	5 Winning Numbers + the Powerball	1 in 54,979,155
2	5 Winning Numbers	1 in 1,249,526
3	4 Winning Numbers + the Powerball	1 in 274,896
4	3 Winning Numbers + the Powerball	1 in 7,049
5	4 Winning Numbers	1 in 6,248
6	2 Winning Numbers + the Powerball	1 in 556
7	3 Winning Numbers	1 in 160

Jackpots

Sometimes no one wins Division One and the prize pool is carried forward to the next draw. This is called a 'jackpot' and it can happen over two or more consecutive draws. It costs the same to play in a jackpot week as it does for other draws.

More ways to play

Multiweek

If you have a set of lucky numbers that you always play, you don't have to fill out a playslip or visit your Lotterywest retailer every week. You can play the same numbers for 2, 5 or 10 weeks by marking the appropriate Number of Weeks box on the playslip.

Advance Wagering

To buy a Powerball ticket up to nine weeks ahead of the current draw, just mark the Advance Play box on the playslip and advise your Lotterywest retailer of the draw you wish to enter.

Syndicates

Another way to play Powerball is to play as a team. You share the cost of the tickets and if your Powerball syndicate wins, you all win. You can join a syndicate at your Lotterywest retailer or create one with your friends, family or workmates. Ask your Lotterywest retailer about syndicate options.

Powerpik

Powerpik is a different way to play Powerball allowing you to have all 45 Powerball numbers in a single game. With Powerpik you are guaranteed to select the Powerball! The easiest way to play Powerpik is to ask your Lotterywest retailer for a Powerpik Slikpik.

Systems

A Systems entry is a quick and easy way to increase the number of games you play in a draw. The more games you play in a draw, the better your chances of winning. Systems can be played by selecting your own numbers on a playslip, or as a Slikpik.

There are two types of Systems games.

Fewer Numbers

These increase your chances of winning by reducing the number of correct Winning Numbers you need. With System 3, you only have to get three Winning Numbers and the Powerball to win the Division One prize. With System 4, you need four Winning Numbers and the Powerball to win Division One. A System 3 costs more than a System 4 because you are guaranteed two numbers instead of one.

More Numbers

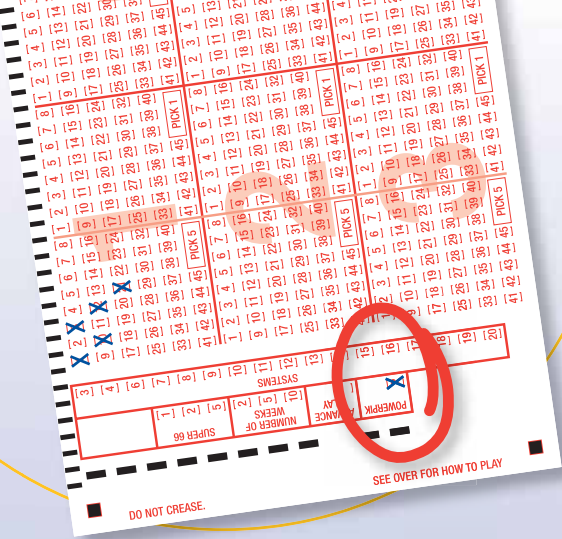
These increase your chances of winning by giving you more numbers in each game. With Systems 6 through to 20, you have more numbers in each draw and more chances to win. Remember, you still have to choose one Powerball for each game.

Powerpik Systems

Powerpik Systems operate in the same way as Powerball Systems except a Powerpik Systems ticket is an entry into a Powerball game that allows you to have all 45 Powerball numbers as well.

Fewer Numbers – Powerpik Systems 3 & 4

With a Powerpik System 3, you only have to get three Winning Numbers from Barrel A to win Division One. And, with a System 4, four Winning Numbers from Barrel A.



With a Powerpik Slikpik the Lotto terminal will produce a ticket that has five random numbers from Barrel A – plus all 45 Powerball numbers.

Alternatively, you can select your own set of numbers by completing a Powerball playslip. You will need to select five numbers in the PICK 5 section of the playslip game panel (Barrel A), and then mark the Powerpik box on the lower left hand side of the playslip.

The PICK 1 section of the playslip game panel must be left blank.

The great benefit of a Powerpik is that when a Powerpik ticket wins, it usually wins multiple prizes. In fact, the only time a Powerpik ticket wins a single prize is when a single board Powerpik ticket has only two Winning Numbers and therefore wins one Division 6 prize. In all other cases, for all other types of Powerpik tickets, you win multiple prizes (please see the back of this brochure for the Powerpik prize table). What's more, because the Powerpik ticket selects all the Powerball numbers, it means that you need to select only five Winning Numbers from Barrel A to win Division One.

More Numbers – Powerpik Systems 6 to 15

With these Systems, you have more numbers in each draw and more chances to win. And you don't need to match the Powerball number because a Powerpik does this for you.

How do I fill in a playslip to play Systems?

On the front of the playslip mark a cross in the Systems box you want to play with a BLUE or BLACK PEN, or PENCIL. Then mark the PICK 5 section of the game panel with the appropriate amount of numbers for the System, eg: System 8, mark 8 numbers. System 9, mark 9 numbers. Then select your Powerball number in the PICK 1 section of the game panel. See example below.

If you would like a Powerpik Systems ticket, follow the above steps however, the most important thing to remember with a Powerpik ticket is that you do not need to select a Powerball number in the PICK 1 section of the game panel. Leave this section blank and mark the Powerpik box instead.

Note: In Western Australia, you can only buy an individual, receipted ticket with a value not exceeding \$100,000.

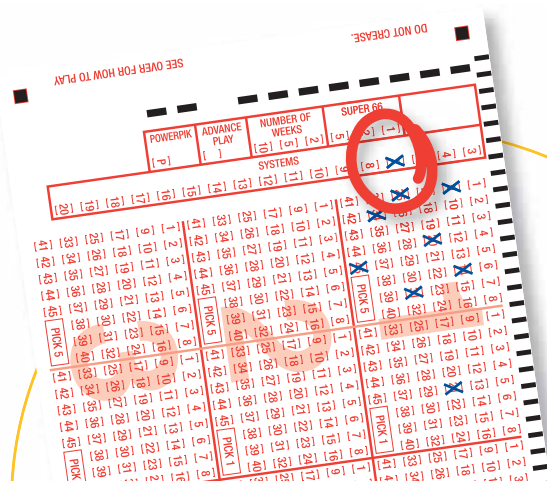
Winning more than one prize

With a Systems entry you can win more than one prize with one entry. Here's an example:

Let's say you have a Powerball System 7 entry and four of your numbers are drawn. A check of every combination in the 21 games the System 7 entry gives you would show that you would win three Division 5 prizes plus twelve Division 7 prizes. See table below.

3, 4, 5, 6, 7	
2, 4, 5, 6, 7	
2, 3, 5, 6, 7	
<u>2, 3, 4</u> , 6, 7	win Division 7
<u>2, 3, 4</u> , 5, 7	win Division 7
<u>2, 3, 4</u> , 5, 6	win Division 7
1, 4, 5, 6, 7	
1, 3, 5, 6, 7	
<u>1, 3, 4</u> , 6, 7	win Division 7
<u>1, 3, 4</u> , 5, 7	win Division 7
<u>1, 3, 4</u> , 5, 6	win Division 7
1, 2, 5, 6, 7	
<u>1, 2, 4</u> , 6, 7	win Division 7
<u>1, 2, 4</u> , 5, 7	win Division 7
<u>1, 2, 4</u> , 5, 6	win Division 7
<u>1, 2, 3</u> , 6, 7	win Division 7
<u>1, 2, 3</u> , 5, 7	win Division 7
<u>1, 2, 3</u> , 5, 6	win Division 7
<u>1, 2, 3, 4</u> , 7	win Division 5
<u>1, 2, 3, 4</u> , 6	win Division 5
<u>1, 2, 3, 4</u> , 5	win Division 5

Let's say you have a Powerpik System 4 entry and three of your numbers are drawn, plus the Powerball (you always get the Powerball with Powerpik!). A check of every combination in the 45 games (that is 1,845 games equivalent) shows that you would win two division 3 prizes plus 39 Division 4 prizes, 88 Division 5 prizes and 1716 Division 7 prizes.



To find out how many prizes you can win with any Powerball or Powerpik Systems ticket please see the fold out Powerball and Powerpik prize tables in this brochure.

What do Systems entries cost?

Systems entries cover multiple combinations of numbers so they naturally cost more than a normal entry. Prices are in the Cost of Entry brochure, which is available from Lotterywest retailers and on the Lotterywest website.

Super 66

You can also play Super 66 when you play Powerball. The idea of the game is to match your 6 numbers – in order from either left or right – with the 6 Winning Numbers drawn each Saturday night just prior to the Saturday Lotto draw. The more numbers you match in order, the bigger your prize.

There are five prize divisions, and you can win with as few as two consecutive numbers in the same order from either end. Ask your Lotterywest retailer or pick up a Lotto brochure for more information.

Prices are in the Cost of Entry brochure, which is available from Lotterywest retailers and on the Lotterywest website.

	WINNING NUMBERS	ODDS OF WINNING
Div 1	6	1 in 1,000,000
Div 2	5	1 in 55,556
Div 3	4	1 in 5,556
Div 4	3	1 in 556
Div 5	2	1 in 56

Check your ticket

Please check your Powerball ticket before you leave your Lotterywest retailer. Check the numbers you wish to play have been correctly selected and make sure you are in the draw you want to play. Prizes can only be paid if you have a valid and correct ticket so it is up to you to check you've got the numbers you want in the draw you want.

After the draw you can find out if you have won a prize using the Lotterywest Ticket Checker. Visit your Lotterywest retailer and scan your ticket barcode to see if you're a winner!

Draw results

Powerball draw results are on television every Thursday night. Check your local television guide for details.

If you miss the draw results or want to check your numbers, use the Ticket Checker at any Lotterywest retailer, visit our website at www.lottoresults.net, or call 1900 919 958 (Dialect Interactive. Calls cost 44 cents per minute including GST. Mobiles and pay phones extra). Results are also published by Lotterywest in The West Australian newspaper.



Collecting your prize

Division 1

You can collect your Division One winnings following a validation period that ends 14 days after the draw. Present your winning ticket and claim your prize at Lotterywest, 74 Walters Drive, Osborne Park, during Monday – Friday office hours. If you live outside the metropolitan area or can't get to our offices, you can post it to PO Box 1113, Osborne Park 6917.

Divisions 2, 3, 4, 5, 6 and 7

You can claim your prize from Lotterywest, 74 Walters Drive, Osborne Park, or at any Lotterywest retailer, the day after the draw. Lotterywest retailers have a \$500 cash payout limit and amounts greater than this may be claimed subject to cash availability. Please check with your retailer.

Under the Lotteries Commission Act, 1990, prizes can only be claimed and paid for up to 12 months after the date of the draw. After this period the ticket is no longer valid. Unclaimed prizes are returned to the Western Australian community via Lotterywest grants.

And remember, your winning ticket is a bearer ticket. It's just like cash, so please keep it safe at all times.

Official Powerball Rules

When you play Powerball you agree to be bound by the rules governing the game. A printed copy is available to view at your Lotterywest retailer or on the Lotterywest website www.lotterywest.com.au

If any conflict should occur between the Rules and information contained in this brochure, the Rules must take precedence.

You must be 16 years of age or older to play any Lotterywest games.

Be a winner, just play for fun

Lottery games are designed to be a fun, low cost form of entertainment. We encourage you to think about your lottery purchases and only spend what you can afford. Lotterywest, together with other members of the gaming industry in Western Australia, supports services for people who have a gambling problem. If you or someone you know would like more information, please phone the Problem Gambling Helpline on Freecall 1800 622 112.

A uniquely Western Australian approach

Established in 1933 as the Lotteries Commission, Lotterywest is the official state lottery for Western Australia. Unlike any other Australian lottery, we not only sell lottery games, we also distribute the profits from our games directly to the Western Australian community. Every time you play one of our games, the Western Australian community wins. For more information on Lotterywest, visit www.lotterywest.com.au

How many prizes can I win?

Powerpik System Entries



Systems		3	4	5	6	7	8	9	10	11	12	13	14	15	
		(Standard Powerpik)													
Winning Numbers															
5 correct	Div 1	–	–	1	1	1	1	1	1	1	1	1	1	1	
	Plus Powerball	Div 2	–	–	44	44	44	44	44	44	44	44	44	44	44
		Div 3	–	–	–	5	10	15	20	25	30	35	40	45	50
		Div 4	–	–	–	–	10	30	60	100	150	210	280	360	450
		Div 5	–	–	–	220	440	660	880	1100	1320	1540	1760	1980	2200
		Div 6	–	–	–	–	–	10	40	100	200	350	560	840	1200
		Div 7	–	–	–	–	440	1320	2640	4400	6600	9240	12320	15840	19800
4 correct	Div 1	–	1	–	–	–	–	–	–	–	–	–	–	–	
	Plus Powerball	Div 2	–	44	–	–	–	–	–	–	–	–	–	–	–
		Div 3	–	40	1	2	3	4	5	6	7	8	9	10	11
		Div 4	–	–	–	4	12	24	40	60	84	112	144	180	220
		Div 5	–	1760	44	88	132	176	220	264	308	352	396	440	484
		Div 6	–	–	–	–	6	24	60	120	210	336	504	720	990
		Div 7	–	–	–	176	528	1056	1760	2640	3696	4928	6336	7920	9680
3 correct	Div 1	1	–	–	–	–	–	–	–	–	–	–	–	–	
	Plus Powerball	Div 2	44	–	–	–	–	–	–	–	–	–	–	–	–
		Div 3	80	2	–	–	–	–	–	–	–	–	–	–	–
		Div 4	780	39	1	3	6	10	15	21	28	36	45	55	66
		Div 5	3520	88	–	–	–	–	–	–	–	–	–	–	–
		Div 6	–	–	–	3	12	30	60	105	168	252	360	495	660
		Div 7	34320	1716	44	132	264	440	660	924	1232	1584	1980	2420	2904
2 correct	Div 3	3	–	–	–	–	–	–	–	–	–	–	–	–	
	Plus Powerball	Div 4	117	3	–	–	–	–	–	–	–	–	–	–	–
		Div 5	132	–	–	–	–	–	–	–	–	–	–	–	–
		Div 6	741	38	1	4	10	20	35	56	84	120	165	220	286
		Div 7	5148	132	–	–	–	–	–	–	–	–	–	–	–
1 correct	Div 4	6	–	–	–	–	–	–	–	–	–	–	–	–	
	Plus Powerball	Div 6	152	4	–	–	–	–	–	–	–	–	–	–	
		Div 7	264	–	–	–	–	–	–	–	–	–	–	–	
0 correct															
Plus Powerball	Div 6	10	–	–	–	–	–	–	–	–	–	–	–	–	