

LOTTO

Player's guide

Saturday
Monday
Wednesday

Answering your questions

If you have any questions or would like any of our games explained in more detail, ask at any Lotterywest retailer or call our Customer Enquiries staff on (08) 9340 5200.

To check your numbers, visit our website at www.lottoresults.net, use the Ticket Checker at any Lotterywest retailer, or call 1900 919 958 (Dialect Interactive. Calls cost 44 cents per minute including GST. Mobiles and pay phones extra).



Lotteries Commission of Western Australia t/a Lotterywest
74 Walters Drive, Osborne Park, Western Australia 6017
Telephone: (08) 9340 5100 Facsimile: (08) 9242 2577
www.lotterywest.com.au

ABN 78 531 150 466



www.lotterywest.com.au

Lotto!

Fun and easy to play

Lotto is the most popular lottery game in Western Australia – and you can play Lotto three times a week!

Every Saturday, Monday and Wednesday night, the Lotto draw machines randomly select coloured balls numbered from one to 45. Eight balls in total are chosen. The first six drawn are called the Winning Numbers. There are two more balls chosen, these are the Supplementary Numbers.

What is the difference between Saturday, Monday and Wednesday Lotto?

Other than the nights on which the draws occur, Lotto differs mainly in the Division One prize pool available in each draw.

Prices for each game are in the Cost of Entry brochure, which is available from Lotterywest retailers and on the Lotterywest website.

Saturday Lotto

Saturday Lotto is our original Lotto game and has a guaranteed, national Division One prize pool every Saturday night.

You can buy Saturday Lotto tickets up to 6.00pm on Saturdays.



| ADVANCE PLAY WEEKS | NUMBER OF | SUPER 66 | DRAW DAY |
|--------------------|-----------|----------|----------|
| 1 | 1 | 0 | MON |
| 1 | 1 | 0 | WED |
| 1 | 1 | 0 | SAT |

| SYSTEMS | 1 | 2 | 3 | 4 | 5 | 6 | 7 | 8 | 9 | 10 | 11 | 12 | 13 | 14 | 15 | 16 | 17 | 18 | 19 | 20 | 21 | 22 | 23 | 24 |
|---------|---|---|---|---|---|---|---|---|---|----|----|----|----|----|----|----|----|----|----|----|----|----|----|----|
| GAME 1 | X | X | X | X | X | X | X | X | X | X | X | X | X | X | X | X | X | X | X | X | X | X | X | X |
| GAME 2 | X | X | X | X | X | X | X | X | X | X | X | X | X | X | X | X | X | X | X | X | X | X | X | X |
| GAME 3 | X | X | X | X | X | X | X | X | X | X | X | X | X | X | X | X | X | X | X | X | X | X | X | X |
| GAME 4 | X | X | X | X | X | X | X | X | X | X | X | X | X | X | X | X | X | X | X | X | X | X | X | X |
| GAME 5 | X | X | X | X | X | X | X | X | X | X | X | X | X | X | X | X | X | X | X | X | X | X | X | X |
| GAME 6 | X | X | X | X | X | X | X | X | X | X | X | X | X | X | X | X | X | X | X | X | X | X | X | X |
| GAME 7 | X | X | X | X | X | X | X | X | X | X | X | X | X | X | X | X | X | X | X | X | X | X | X | X |
| GAME 8 | X | X | X | X | X | X | X | X | X | X | X | X | X | X | X | X | X | X | X | X | X | X | X | X |
| GAME 9 | X | X | X | X | X | X | X | X | X | X | X | X | X | X | X | X | X | X | X | X | X | X | X | X |
| GAME 10 | X | X | X | X | X | X | X | X | X | X | X | X | X | X | X | X | X | X | X | X | X | X | X | X |
| GAME 11 | X | X | X | X | X | X | X | X | X | X | X | X | X | X | X | X | X | X | X | X | X | X | X | X |
| GAME 12 | X | X | X | X | X | X | X | X | X | X | X | X | X | X | X | X | X | X | X | X | X | X | X | X |
| GAME 13 | X | X | X | X | X | X | X | X | X | X | X | X | X | X | X | X | X | X | X | X | X | X | X | X |
| GAME 14 | X | X | X | X | X | X | X | X | X | X | X | X | X | X | X | X | X | X | X | X | X | X | X | X |
| GAME 15 | X | X | X | X | X | X | X | X | X | X | X | X | X | X | X | X | X | X | X | X | X | X | X | X |
| GAME 16 | X | X | X | X | X | X | X | X | X | X | X | X | X | X | X | X | X | X | X | X | X | X | X | X |
| GAME 17 | X | X | X | X | X | X | X | X | X | X | X | X | X | X | X | X | X | X | X | X | X | X | X | X |

Monday and Wednesday Lotto

Monday and Wednesday Lotto offer you the opportunity to play Lotto during the week with guaranteed, national Division One prize pools for both draws.

You can buy Monday Lotto tickets up to 6.00pm on Mondays and Wednesdays.

If you also play Saturday Lotto, you can play Monday and Wednesday Lotto with the same playslip or Slikipik request. Just ask any Lotterywest retailer for more information.

How do I play Lotto?

Visit a Lotterywest retailer to purchase a Lotto ticket. There are two ways to play, either by using playslips or Slikipiks.

Playslips

Look for this playslip

For a standard entry, mark your six numbers between 1 and 45 in each of the game boards you wish to play. NOTE: A minimum of **four** games must be completed to play Lotto.

Please mark all sections with a cross using a BLUE or BLACK PEN, or PENCIL.

Mark the days you would like to play in the 'Draw Day' box. You can play any combination of Saturday, Monday or Wednesday Lotto draws each week. For example if you want to be in all draws, mark all of the 'SAT', 'MON' and 'WED' boxes.

DO NOT CREASE.

SEE OVER FOR HOW TO PLAY

If you want to play the same numbers and games for more than one week, simply mark the 'Number of Weeks' box. You can play for 2, 5 or 10 weeks.

If you want to play Super 66 you can purchase 1, 2, or 5 Super 66 games by marking the appropriate box on the playslip. Super 66 is drawn weekly in conjunction with Saturday Lotto. For more information on Super 66 see page 13.

Finally, give the playslip to your Lotterywest retailer who will process it through the terminal and give it back to you with a print out of your chosen numbers. This is your ticket and is needed to claim prizes, so please keep it in a safe place.

Slikpiks

Slikpiks are tickets of randomly selected numbers produced by the terminal. Slikpik 25 is a popular choice, but there are also 50, 30, 18, and 12 game Slikpiks. Slikpiks are also available for Systems tickets.

Ticket Repeat

You can select your numbers to enter future Saturday Lotto, Monday Lotto and Wednesday Lotto draws by presenting an existing ticket (including Slikpiks) and requesting the same type of ticket and combination of numbers. Just ask your Lotterywest retailer about the Ticket Repeat option.

How do I win?

Lotto has five prize divisions. The more Winning Numbers you have, the bigger the prize.

| DIVISION | WHAT YOU NEED TO WIN | ODDS OF WINNING |
|----------|--|-----------------|
| 1 | 6 Winning Numbers | 1 in 8,145,060 |
| 2 | 5 Winning Numbers + 1 Supplementary Number | 1 in 678,755 |
| 3 | 5 Winning Numbers | 1 in 36,690 |
| 4 | 4 Winning Numbers | 1 in 733 |
| 5 | 3 Winning Numbers + 1 Supplementary Number | 1 in 298 |



Saturday Lotto Superdraws and Megadraw

Superdraws

Saturday Lotto Superdraws are your chance to win even bigger prizes. The prize pool for Division One can be \$20 million. Superdraws are usually held several times a year. Your Lotterywest retailer can tell you when they're coming up. The cost to buy a ticket in a Superdraw is the same as a normal Saturday Lotto draw.

The Megadraw

The Megadraw is the biggest of all Saturday Lotto draws and is held in December each year. The Division One prize pool has reached as high as \$33 million in the past! The cost to buy a ticket in the Megadraw is the same as a normal Saturday Lotto draw.

Monday and Wednesday Lotto jackpots

Sometimes no one wins Division One in Monday or Wednesday Lotto and the prize pool is carried forward to the next draw. This is called a 'jackpot' and it can happen over two or more consecutive draws.

Monday and Wednesday Lotto can jackpot between the two draw days. This means that if Monday's Division One prize pool is not won, the Division One prize pool jackpots to Wednesday's draw and if Wednesday's is not won, it jackpots to Monday's draw.

More ways to play

Multiweek

If you have a set of lucky numbers you always play, you don't have to fill out a playslip or visit your Lotterywest retailer every week. You can play the same numbers for 2, 5 or 10 weeks by marking the appropriate 'Number of Weeks' box on the playslip.

Advance Wagering

To buy a Lotto ticket up to nine weeks ahead of the current draw, just mark the 'Advance Play' box on the playslip and advise your Lotterywest retailer of the draw you wish to enter.

Syndicates

Another way to play Lotto is to play as a team. You share the cost of the tickets and if your Lotto syndicate wins, you all win! You can join a syndicate at your Lotterywest retailer or create one with your friends, family or workmates. Ask your Lotterywest retailer about syndicate options.



Systems

A Systems entry is a quick and easy way to increase the number of games you play in a draw. The more games you play in a draw, the better your chances of winning. Systems can be played by selecting your own numbers on a playslip, or as a Slikpik.

There are two types of Systems games.

Fewer numbers

These increase your chances of winning by reducing the number of correct Winning Numbers you need. With a System 4, you only have to get four Winning Numbers to win the Division One prize. With a System 5, you need five Winning Numbers to win Division One. A System 4 costs more than a System 5 because you are guaranteed two numbers instead of one.

More numbers

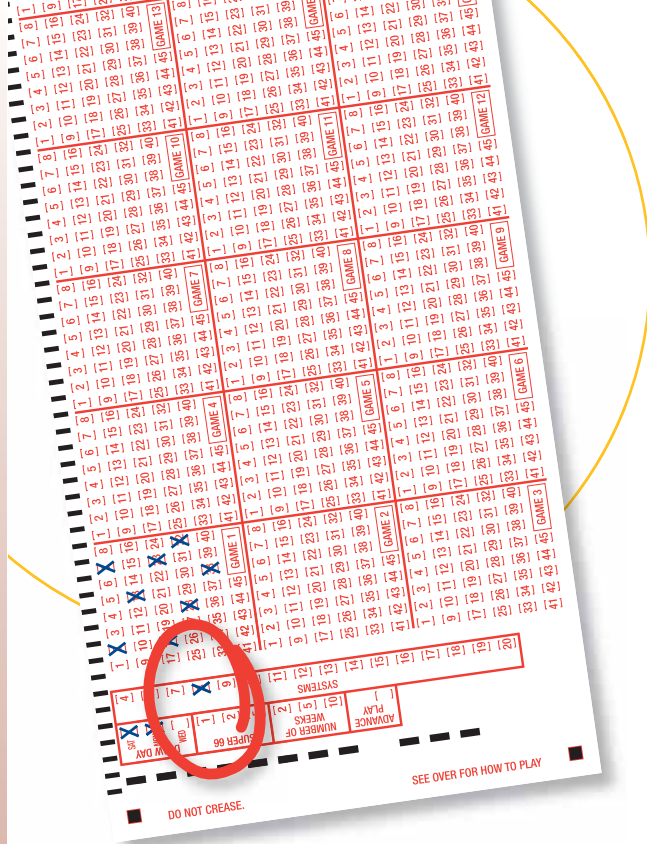
These increase your chances of winning by giving you more numbers in each game. With Systems 7 through to 20, you have more numbers in each draw, and more chances to win.

How do I fill in a playslip to play Systems?

On the front of the playslip mark a cross in the Systems box you want to play with a BLUE or BLACK PEN, or PENCIL. Then mark the game board with the appropriate amount of numbers for the System, eg: System 8, mark 8 numbers. System 9, mark 9 numbers. Systems can also be played as Slikpiks.

Remember to mark in the 'Draw Day' box the Lotto draw day(s) to be played.

Note: In Western Australia, you can only buy an individual, receipted ticket with a value not exceeding \$100,000.



Winning more than one prize

With a Systems entry you can win more than one prize with one entry. Here's an example:

Let's say you have a Lotto System 8 entry and four of your numbers and one of the supplementary numbers are drawn, for example the combination 1,2,3,4 and the Supplementary Number 5. If you were to write out every combination of the 28 games a System 8 entry gives you, you'd find that you have won six Division 4 prizes and 12 Division 5 prizes. See the table on the next page.

Winning more than one prize

SUPER 66

| | |
|------------------|----------------|
| 3, 4, 5, 6, 7, 8 | |
| 2, 4, 5, 6, 7, 8 | |
| 2, 3, 5, 6, 7, 8 | |
| 2, 3, 4, 6, 7, 8 | |
| 2, 3, 4, 5, 7, 8 | win Division 5 |
| 2, 3, 4, 5, 6, 8 | win Division 5 |
| 2, 3, 4, 5, 6, 7 | win Division 5 |
| 1, 4, 5, 6, 7, 8 | |
| 1, 3, 5, 6, 7, 8 | |
| 1, 3, 4, 6, 7, 8 | |
| 1, 3, 4, 5, 7, 8 | win Division 5 |
| 1, 3, 4, 5, 6, 8 | win Division 5 |
| 1, 3, 4, 5, 6, 7 | win Division 5 |
| 1, 2, 5, 6, 7, 8 | |
| 1, 2, 4, 6, 7, 8 | |
| 1, 2, 4, 5, 7, 8 | win Division 5 |
| 1, 2, 4, 5, 6, 8 | win Division 5 |
| 1, 2, 4, 5, 6, 7 | win Division 5 |
| 1, 2, 3, 6, 7, 8 | |
| 1, 2, 3, 5, 7, 8 | win Division 5 |
| 1, 2, 3, 5, 6, 8 | win Division 5 |
| 1, 2, 3, 5, 6, 7 | win Division 5 |
| 1, 2, 3, 4, 7, 8 | win Division 4 |
| 1, 2, 3, 4, 6, 8 | win Division 4 |
| 1, 2, 3, 4, 6, 7 | win Division 4 |
| 1, 2, 3, 4, 5, 8 | win Division 4 |
| 1, 2, 3, 4, 5, 7 | win Division 4 |
| 1, 2, 3, 4, 5, 6 | win Division 4 |

To find out how many prizes you can win with any Lotto systems ticket, please refer to the fold out Lotto prize table in this brochure.

What do Systems entries cost?

Systems entries cover multiple combinations of numbers so they naturally cost more than a normal entry. Prices are in the Cost of Entry brochure, which is available from Lotterywest retailers and on the Lotterywest website.

Super 66 is a simple numbers game that gives you an extra chance to win on Saturday nights. And you don't even have to select the numbers, the computer does it for you.

When you play Super 66 you get a separate ticket containing six randomly selected numbers from 0 to 9. The idea of the game is to match your six numbers with the six Winning Numbers drawn each Saturday night in order from either left or right. The more numbers you match in order, the bigger your prize money.

Prices are in the Cost of Entry brochure, which is available from Lotterywest retailers and on the Lotterywest website.

When can I play Super 66?

You can join in Super 66 when you play Saturday Lotto, Monday Lotto, OZ Lotto, Wednesday Lotto, Powerball or Soccer Pools. When filling out a playslip, simply indicate how many games of Super 66 you'd like by marking a cross in the appropriate box.

Or, when buying a Slikpik, ask for Super 66 to be added to your purchase and it will be automatically printed on a separate Super 66 ticket. You can play 1, 2, or 5 Super 66 games.

How do I win?

You need at least two consecutive numbers on either end that match the winning Super 66 numbers. Matching numbers that don't appear at either end don't win.

Let's say the Winning Numbers are **123456** in drawn order.

You'll win Division 1 with **123456**

You'll win Division 2 with **123459** or **823456**

You'll win Division 3 with **123409** or **803456**

You'll win Division 4 with **123809** or **809456**

You'll win Division 5 with **128709** or **809156**

If you have Winning Numbers at both ends of the ticket, you only win one of the prizes. However, if you have matching numbers in different divisions, you win the larger of the two prizes. If no one wins Division One the prize pool jackpots to the next week.

Super 66 has five prize divisions as below.

| | WINNING NUMBERS | ODDS OF WINNING |
|-------|-----------------|-----------------|
| Div 1 | 6 | 1 in 1,000,000 |
| Div 2 | 5 | 1 in 55,556 |
| Div 3 | 4 | 1 in 5,556 |
| Div 4 | 3 | 1 in 556 |
| Div 5 | 2 | 1 in 56 |

Check your ticket

Please check your Lotto ticket before you leave your Lotterywest retailer. Check the numbers you wish to play have been correctly selected and make sure you are in the draw you want to play. Prizes can only be paid if you have a valid and correct ticket so it is up to you to check you've got the numbers you want in the draw you want.

After the draw you can find out if you have won a prize using the Lotterywest Ticket Checker. Visit your Lotterywest retailer and scan your ticket barcode to see if you're a winner!

Draw results

Lotto draw results are on television every Saturday, Monday and Wednesday nights. Check your local television guide for details.

If you miss the draw results or want to check your numbers, use the Ticket Checker at any Lotterywest retailer, visit our website at www.lottoresults.net, or call 1900 919 958 (Dialect Interactive. Calls cost 44 cents per minute including GST. Mobiles and pay phones extra). Results are also published by Lotterywest in The West Australian newspaper.



Collecting your prize

Division 1

You can collect your Division One winnings following a validation period that ends 14 days after the draw. Present your winning ticket and claim your prize at Lotterywest, 74 Walters Drive, Osborne Park, during Monday – Friday office hours. If you live outside the metropolitan area or can't get to our offices, you can post it to PO Box 1113, Osborne Park 6917.

Divisions 2, 3, 4 and 5

You can claim your prize from Lotterywest, 74 Walters Drive, Osborne Park, or at any Lotterywest retailer, the day after the draw. Lotterywest retailers have a \$500 cash payout limit and amounts greater than this may be claimed subject to cash availability. Please check with your retailer.

Under the Lotteries Commission Act, 1990, prizes can only be claimed and paid for up to 12 months after the date of the draw. After this period the ticket is no longer valid. Unclaimed prizes are returned to the Western Australian community via Lotterywest grants.

And remember, your winning ticket is a bearer ticket. It's just like cash, so please keep it safe at all times.

Official Lotto Rules

When you play Lotto you agree to be bound by the rules governing the game. A printed copy is available to view at your Lotterywest retailer or on the Lotterywest website www.lotterywest.com.au

If any conflict should occur between the Rules and information contained in this brochure, the Rules must take precedence.

You must be 16 years of age or older to play any Lotterywest games.

Be a winner, just play for fun

Lottery games are designed to be a fun, low cost form of entertainment. We encourage you to think about your lottery purchases and only spend what you can afford. Lotterywest, together with other members of the gaming industry in Western Australia, supports services for people who have a gambling problem. If you or someone you know would like more information, please phone the Problem Gambling Helpline on Freecall 1800 622 112.

A uniquely Western Australian approach

Established in 1933 as the Lotteries Commission, Lotterywest is the official state lottery for Western Australia. Unlike any other Australian lottery, we not only sell lottery games, we also distribute the profits from our games directly to the Western Australian community. Every time you play one of our games, the Western Australian community wins. For more information on Lotterywest, visit www.lotterywest.com.au